



Ayuroma Centre

Ayuroma Centre

Manufacturer Of Essential Oils

GST No.: 09AMLPK4254H1ZT

IEC : 0606003053

Technical Data Sheet Curry Leaf Essential Oil

A.		General Information		
I	Product Name	Curry Leaf Oil		
II	Batch/ Lot No.	2342082407		
III	CAS Number	876068-15-4		
IV	Botanical Name	<i>Murraya koenigii</i>		
V	Family	Rutaceae		
VI	Country of Origin	India		
VII	Plant Part used	Leaves		
VIII	Extraction Method	Steam distillation		
IX	Shelf Life	3 years		
B.		Description & Uses		
Curry Leaf Oil is used in traditional medicine to treat a variety of ailments, including digestive issues, skin conditions, and hair problems. It is also used as a flavoring agent in cooking, particularly in South Indian cuisine. Curry leaf oil is used in cosmetics and personal care products, such as soaps and hair oils, as it is believed to promote hair growth and improve the health of the scalp.				
C.		Physical Analysis Report		
Parameter		Result		
I	Appearance	Pale yellow to yellow, free flowing liquid		
II	Odour	Characteristic odour		
III	Solubility	Soluble in 90% alcohol		
IV	Flash point	>100°C		
V	Boling point	N/A		
Parameter		Minimum	Maximum	Result
VI	Specific Gravity (20°C)	0.8650	0.8850	0.8722
VII	Refractive Index (28.2°C)	1.4650	1.4850	1.4729
VIII	Optical Rotation (28.5°C)	-30.0°	-20.0°	-27.11°
D.		Gas Chromatography Analysis Report		
Constituents		Minimum (%)	Maximum (%)	Result (%)
I	Alpha Pinene	40	45	42.57





Ayuroma Centre

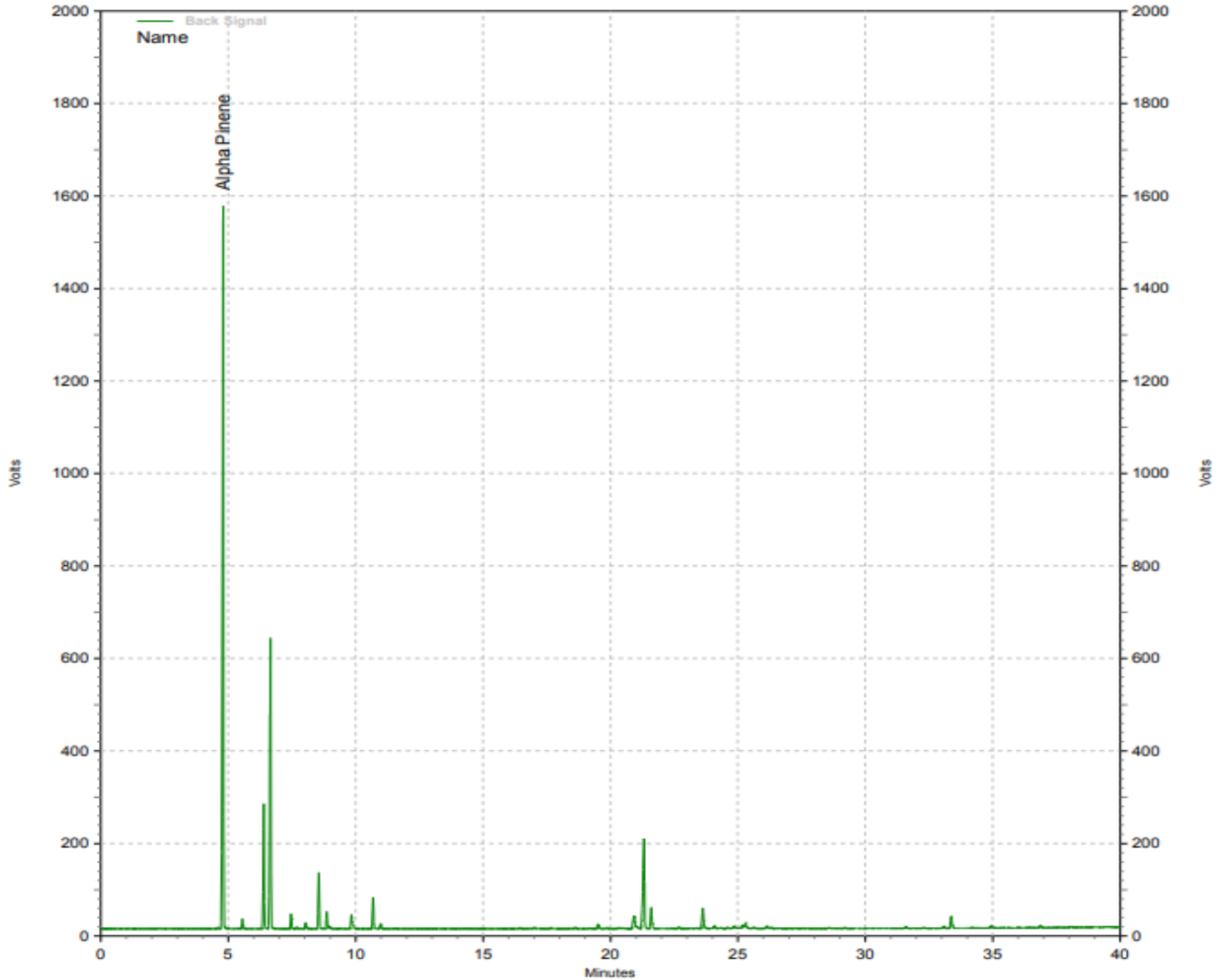
Ayuroma Centre

Manufacturer Of Essential Oils

GST No.: 09AMLPK4254H1ZT

IEC : 0606003053

E. Chromatogram



Representative Chromatogram of Curry Leaf Oil (2342082407).

F.	Declaration
	This information is based upon the present state of our knowledge. The analysis and statements herein constitute the most complete information available to Ayuroma Centre.

Kalpna

(Dr. Kalpana Katiyar)
Head, ATRIC

